

# CONTACT US

- +678-367-4007
- crys@thegapssociety.org
- www.thegapssociety.org
- Gwinnett County, GA

## REFERENCES

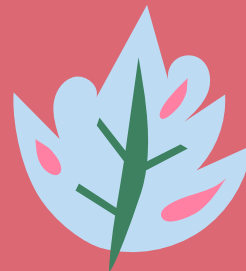
autismspeaks.org  
healthychildren.org  
acornhealth.com  
crossrivertherapy.com



## REGULATION

# SAFETY TIPS

- Know wandering triggers.
- Secure your home.
- Work on communication and behavior strategies.
- Set expectations.
- Consider monitoring technology and identification.
- Rest.



# BACK

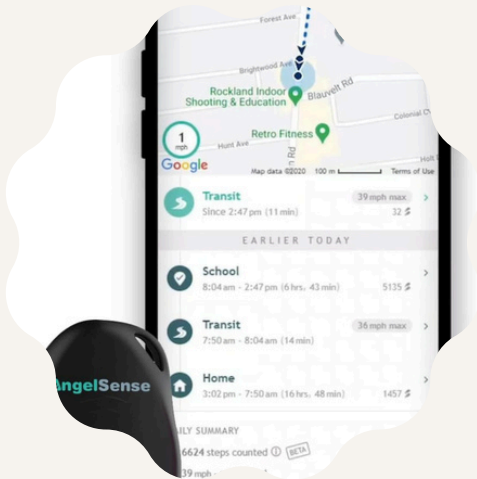
# TO

# SCHOOL

# SAFETY

# MONITORING

## DEVICES



**Angelsense GPS tracking**

**Apple airtag**

**Tile**

**Simplisafe (alarm system)**

# ACCOMODATIONS



## Handicap Placard

To be filled out by your child's physician

## TSA Cares

Airport assistance. Someone from TSA will call you 3+ hours before your flight and let you know where to meet in the airport. You will not have to wait in the security line, and they can also escort you directly to your gate.

## Universal Studios

Now required to apply 48hrs in advance of visiting the park. Card allows you to bypass the longer lines.

**Always ask about options for accommodations ahead of time!**

# IDENTIFICATION

## AWARENESS



**Georgia Dept. of Driver Services (DDS)**

**Application allows you to add the disability to your license.**

**Georgia Dept. of Revenue Application for license plate**

**Autism Elopement Form (For Emergency situations)**